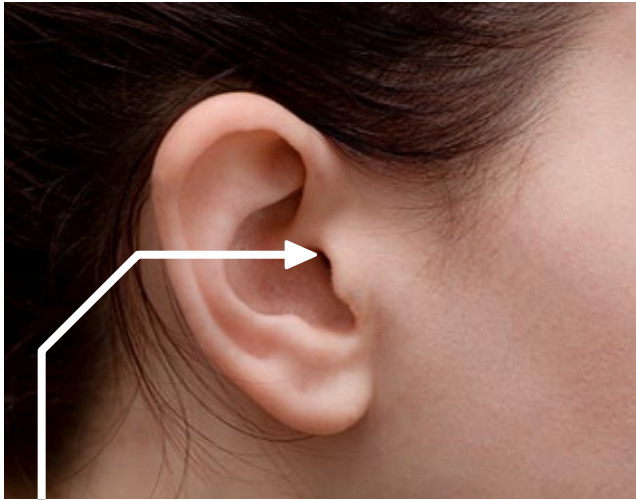
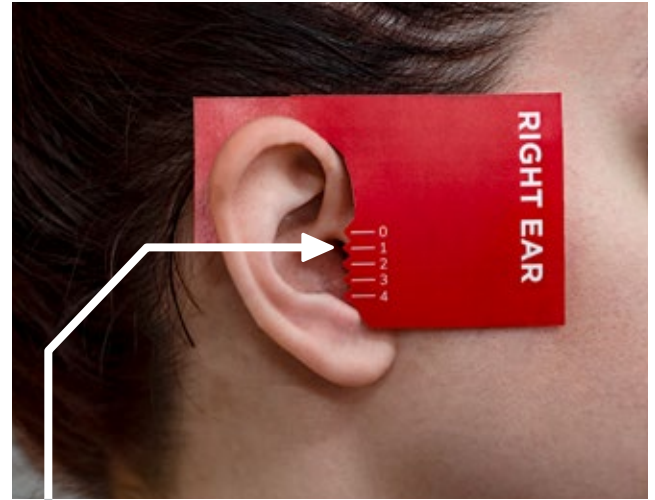


For Open Fit and Speaker-In-The-Ear hearing aids, it's important to have a secure, comfortable fit. Here's how to accurately measure your ears.



The sound tip needs to fit into the upper portion of the ear canal.



Place the measurement tool over the ear. It should fit firmly over the ear with little or no gaps as shown.

Position the 0-4 markers as shown and note which marker is closest to the upper portion of your ear canal. (Size 1 in this example).

If your measurement falls between 2 sizes, the larger tube is selected.

Print the America Hears tube measurement tool at 100%. Cut out and place over each ear as shown above to measure the number length for tubing.

